

 **Walt Disney's Comics and Stories – Vol. 10 No. 9**  
**(June 1950)**

**Evaluation Date:** April 5, 2026

A DELL COMIC  
**DELL**  
A DELL COMIC

No. 117

# WALT DISNEY'S COMICS

AND  
STORIES  
10¢

JUNE  
1950  
Vol. 10 No. 9

52 pages  
ALL COMICS!



# SUMMARY OF OBSERVATIONS

*Walt Disney's Comics and Stories – Vol. 10 No. 9 (June 1950)*

The front cover exhibits strong, even green color saturation across the visible field, with bold, legible title lettering and clear character artwork. Despite this retained visual strength, the cover shows multiple forms of physical damage concentrated along the spine and upper edge. Along the top edge of the front cover near the spine, a full-thickness tear is visible, extending inward approximately **~6–8 mm**, with irregular separation and exposed lighter interior fibers interrupting the straight edge. Additional damage occurs along the spine, where multiple areas of paper loss are visible as irregular gaps in the cover stock, including several losses measuring approximately **~4–6 mm**, and a larger loss near the lower spine measuring approximately **~8–10 mm**.

Surface deformation on the front cover is also evident. Several diagonal and vertical creases radiate outward from the spine into the green cover field, extending approximately **~15–30 mm**. Fine cracking is present along portions of the spine fold, with the most severe deterioration concentrated in the lower spine zone. In this area, paper loss and weakening span approximately **~12–15 mm vertically**, contributing to reduced structural stability. Corner wear is present, with moderate rounding at the lower corners affecting approximately **~6–9 mm inward** from the original corner points.

Interior examination corroborates the exterior damage. On the inside front cover, paper separation is visible at the upper margin near the spine hinge, spanning approximately **~6–8 mm**, aligning with the front-cover tear and confirming full-thickness damage. Interior pages are complete and readable, showing uniform cream-to-light-tan toning that darkens toward the margins by approximately **~5–8 mm**, with minor edge waviness. The spine overall exhibits abrasion, cracking, and paper loss distributed primarily across the lower half, affecting an estimated **~40–45 mm total length**, while both staples remain present despite surrounding paper stress, more pronounced at the lower staple.

---

## FRONT COVER — OBSERVATIONS

*Walt Disney's Comics and Stories – Vol. 10 No. 9 (June 1950)*

### Photo Validation (img\_2259 Front Cover)

The photograph is evenly lit, in sharp focus, and fully frames the entire front cover, including the top edge, spine, corners, and lower margin. Resolution is sufficient to clearly distinguish paper fibers, edge interruptions, crease lines, and ink clarity. The image is adequate for detailed evaluation of tear morphology, paper loss, and surface wear.

## Scene & Composition

The cover depicts Donald Duck in a domestic scene rendered against a predominantly green background. The masthead occupies the upper portion of the cover, with character artwork centered below. No compositional elements obscure the evaluation of edges or spine.

## Findings

Along the top edge near the spine, a full-thickness tear extends inward approximately **~6–8 mm**, exhibiting irregular separation and exposed lighter fibers. Along the spine edge, multiple areas of paper loss are visible, including several losses measuring **~4–6 mm** and one larger loss near the lower spine measuring approximately **~8–10 mm**. The lower spine zone shows the heaviest deterioration, with missing cover stock spanning approximately **~12–15 mm vertically** along the fold. Several diagonal and vertical surface creases radiate from the spine into the cover field, extending **~15–30 mm**. Fine surface cracking is visible near the mid-spine. Light abrasion affects the bottom edge over approximately **~10–15 mm** near the spine. Moderate rounding is present at both lower corners, extending **~6–9 mm inward**, while upper corners show lighter rounding. No writing, stamps, or markings are visible.

## Overall Impression

The front cover retains vivid color and strong visual definition but exhibits clearly measurable structural damage at the top edge and spine, accompanied by creasing and corner wear that materially affect physical condition.

---

## BACK COVER — OBSERVATIONS

*Walt Disney's Comics and Stories – Vol. 10 No. 9 (June 1950)*

### Photo Validation (img\_2257 Back Cover)

The image is well framed, evenly lit, and in focus, showing all edges, corners, and the full spine edge. Detail is sufficient to assess edge wear and paper texture.

**A TRIPLE TREAT**  
 IN CLEAN WHOLESOME *Entertainment!*

**Free!** Full-colored, long-sticking appliques are given with your subscription to **WALT DISNEY'S COMICS & STORIES**.

**Subscribe Now!** and get the Bondex tape with your favorite Disney character on it—ideal for decorating clothing, linens, curtains, etc.

Mail to: **K. K. PUBLICATIONS, Inc.** DEPT. 6 Poughkeepsie, N. Y.

Enclosed please find \$\_\_\_\_\_ for which please send a \_\_\_\_\_ year subscription to **WALT DISNEY'S COMICS AND STORIES** and the Free Bondex Appliques to:

PLEASE PRINT  
 Name \_\_\_\_\_  
 Street and Number \_\_\_\_\_  
 City or Town \_\_\_\_\_ Mailing Dist. No. \_\_\_\_\_ State \_\_\_\_\_  
 Donor's Name \_\_\_\_\_  
 Address \_\_\_\_\_

**SUBSCRIPTION RATES**  
 5 years—\$4.00    3 years—\$2.50    2 years—\$1.75    1 year—\$1.00

ENTER SUBSCRIPTION HERE!

## Findings

The back cover exhibits uniform tan/cream toning consistent with age. Along the spine edge, abrasion and thinning are visible, corresponding to the front-cover spine damage and affecting approximately ~35–40 mm of the spine length. Light wear is present along the bottom edge over approximately ~20–25 mm. Corners show general rounding, more pronounced at the lower corners. No significant paper loss is observed within the back-cover field.

## Overall Impression

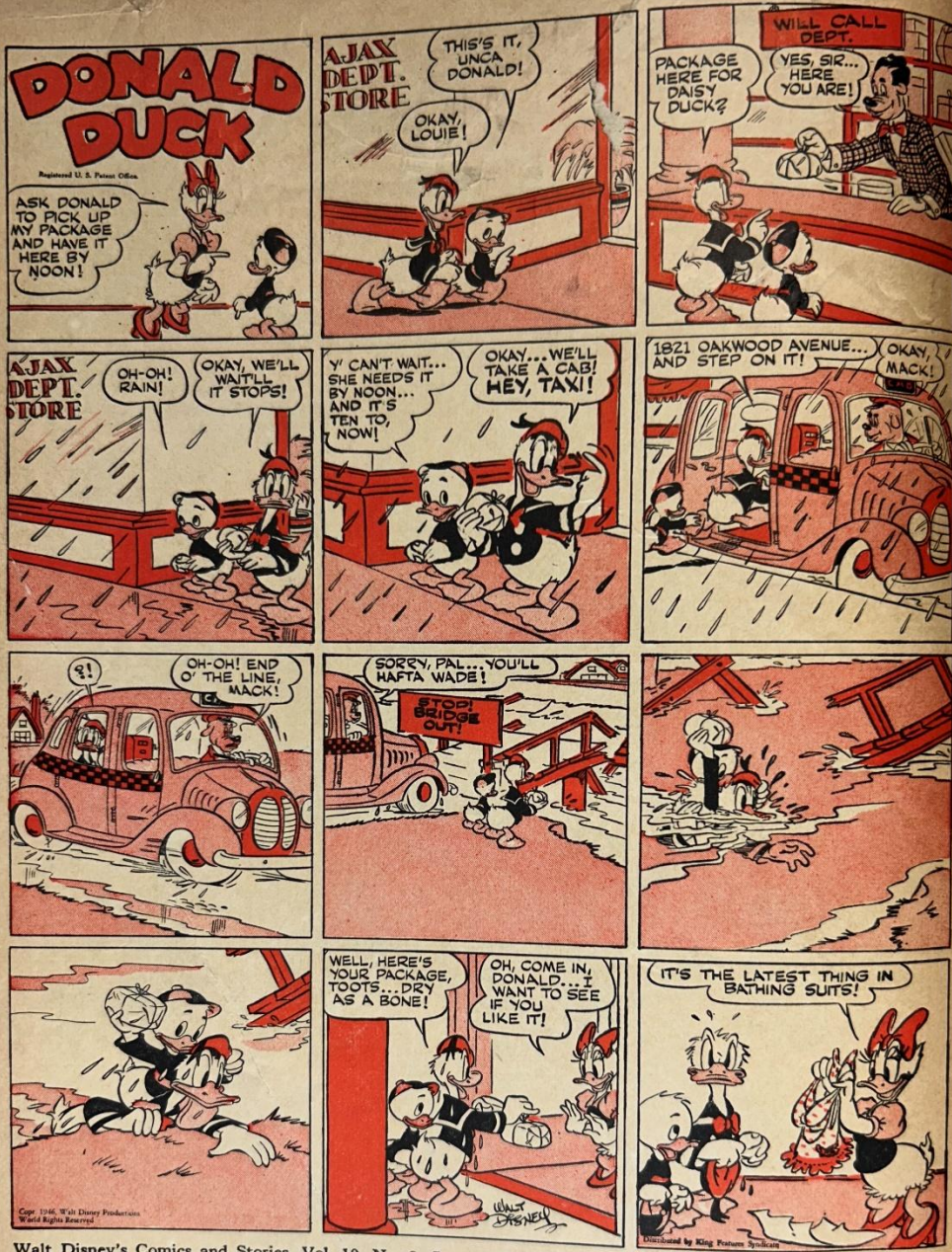
The back cover remains intact with age-consistent toning and measurable spine-edge wear but without major surface losses.

# **INSIDE FRONT COVER — OBSERVATIONS**

*Walt Disney's Comics and Stories – Vol. 10 No. 9 (June 1950)*

## **Photo Validation (img\_2258 Inside Front Cover)**

The image is straight-on, in focus, and clearly captures the upper margin and spine hinge area, allowing evaluation of separation and hinge stress.



Walt Disney's Comics and Stories, Vol. 10, No. 9, June, 1950. Published monthly by arrangement with Walt Disney Productions. Subscription price in the U.S.A., \$1 per year, 10 cents per copy; foreign subscriptions, \$2 per year; no Canadian subscriptions accepted. Entered as second-class matter at the Post Office at Poughkeepsie, N. Y., under the act of March 3, 1879. All rights reserved by Walt Disney Productions throughout the world. K. K. Publications, Inc., assumes no responsibility for return of unsolicited manuscripts. Owners submitting manuscripts assume all risk for their loss or damage. Printed in U.S.A., by Western Printing & Lithographing Co. Entire contents copyright, 1937, 1938, 1946, 1947, 1950, by Walt Disney Productions. Published by

**K. K. PUBLICATIONS, Inc., POUGHKEEPSIE, NEW YORK, U.S.A.**  
CHANGE OF ADDRESS requires four weeks. Old address, as well as new, must be given.  
A copy of your old address, as shown on the back cover of the magazine, will speed delivery.

## Findings

At the upper margin near the spine hinge, full-thickness paper separation is visible, measuring approximately **~6–8 mm**, aligning precisely with the front-cover top-edge tear. Hinge stress extends downward approximately **~20–25 mm**, visible as slight distortion and fiber strain without full detachment. No writing, stamps, or subscription marks are present. The indicia is visible and legible.

## Overall Impression

The inside front cover clearly corroborates the front-cover tear and shows localized hinge stress but is otherwise clean.

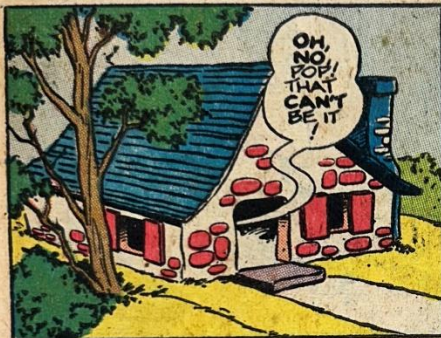
---

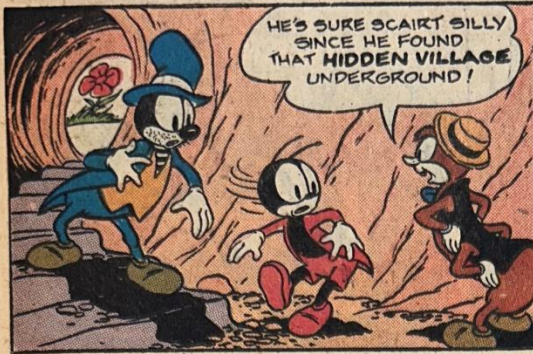
## INTERIOR PAGES — OBSERVATIONS

*Walt Disney's Comics and Stories – Vol. 10 No. 9 (June 1950)*

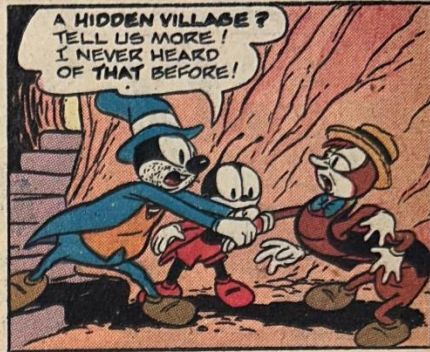
### Photo Validation (img\_2260–img\_2263 Inside Pages)

The interior page images are clearly focused and evenly lit, with margins, gutters, and artwork panels fully visible. The photos are adequate for evaluating toning, edge condition, and page integrity.





HE'S SURE SCAIRT SILLY SINCE HE FOUND THAT HIDDEN VILLAGE UNDERGROUND!



A HIDDEN VILLAGE? TELL US MORE! I NEVER HEARD OF THAT BEFORE!



A SPOOKY PLACE... WHERE KILLERS DWELL! BUT THEM THET SPIES, DON'T LIVE T'TELL!

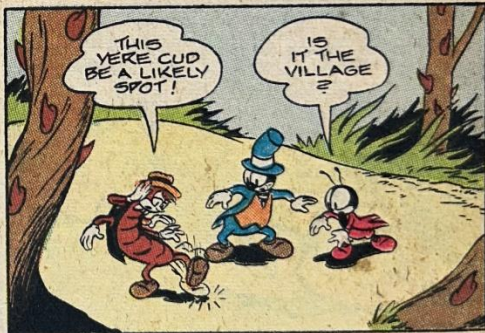


WE'VE GOTTA FIND THAT VILLAGE, SO...! BEFORE THEY KILL TIGE, TOO!

LET'S GO!



I'LL HELP! JUST LEAVE UT UP T'ME! US ANGLEWORMS'RE SMART, Y'SEE!



THIS YERE CUD BE A LIKELY SPOT!

IS IT THE VILLAGE?

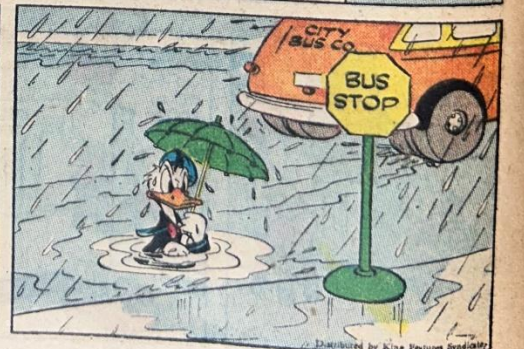
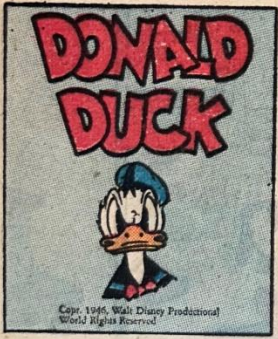
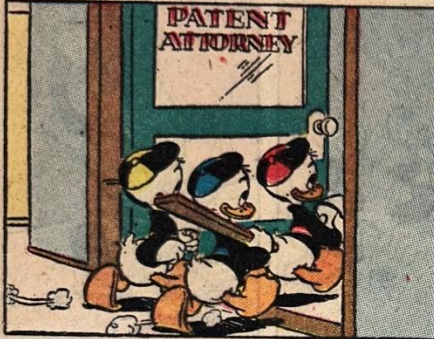
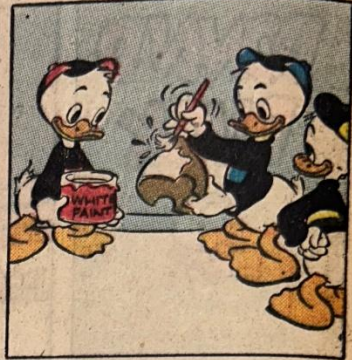
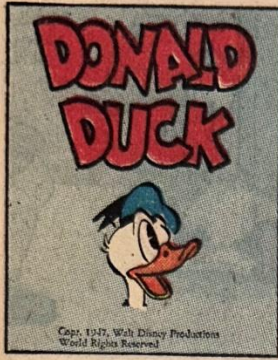


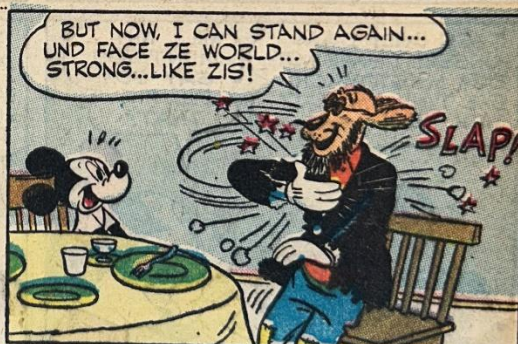
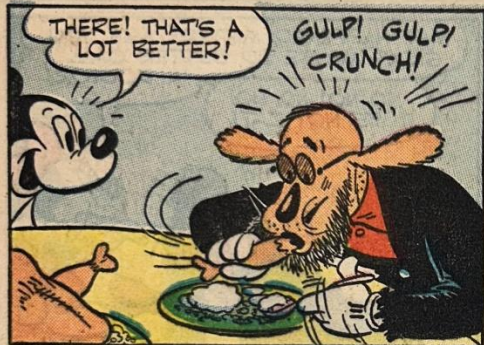
NOPE! IT'S NOT!



GEE-WHULLIKUN! A HOLLER SOUND!

THAT MEANS A TUNNEL UNDERGROUND!





## **Page Color**

Cream to light tan.

## **Findings**

Pages exhibit uniform age-related toning, darkening toward the outer margins by approximately **~5–8 mm**. Minor edge waviness is present along several page edges. Light corner softening is visible, with no missing fragments. No interior tears, writing, or clipped corners are observed. Gutters remain intact with no splitting.

## **Overall Impression**

Interior pages are complete, legible, and evenly aged with minor handling effects only.

---

# CENTERFOLD — OBSERVATIONS

Walt Disney's Comics and Stories – Vol. 10 No. 9 (June 1950)

## Photo Validation (img\_2264 Centerfold)

The image clearly shows the full centerfold, both staples, and the fold line. Focus and lighting are sufficient to evaluate attachment and fold stress.



## Findings

The centerfold remains attached at both staples. The fold line shows mild compression but no tearing.

## Overall Impression

The centerfold is structurally stable.

---

## SPINE — OBSERVATIONS

*Walt Disney's Comics and Stories – Vol. 10 No. 9 (June 1950)*

### Photo Validation (img\_2265 Spine)

A side-profile image clearly shows the full spine length and adjacent cover edges. Lighting and focus allow detailed inspection of cracking and paper loss.



## Findings

The spine shows abrasion, cracking, and paper loss distributed primarily along the lower half, affecting a total length of approximately **~40–45 mm**. Exposed fibers are visible in multiple discrete areas measuring **~4–10 mm**. No single continuous spine split is present.

## Overall Impression

Spine damage represents the primary structural weakness of the book.

---

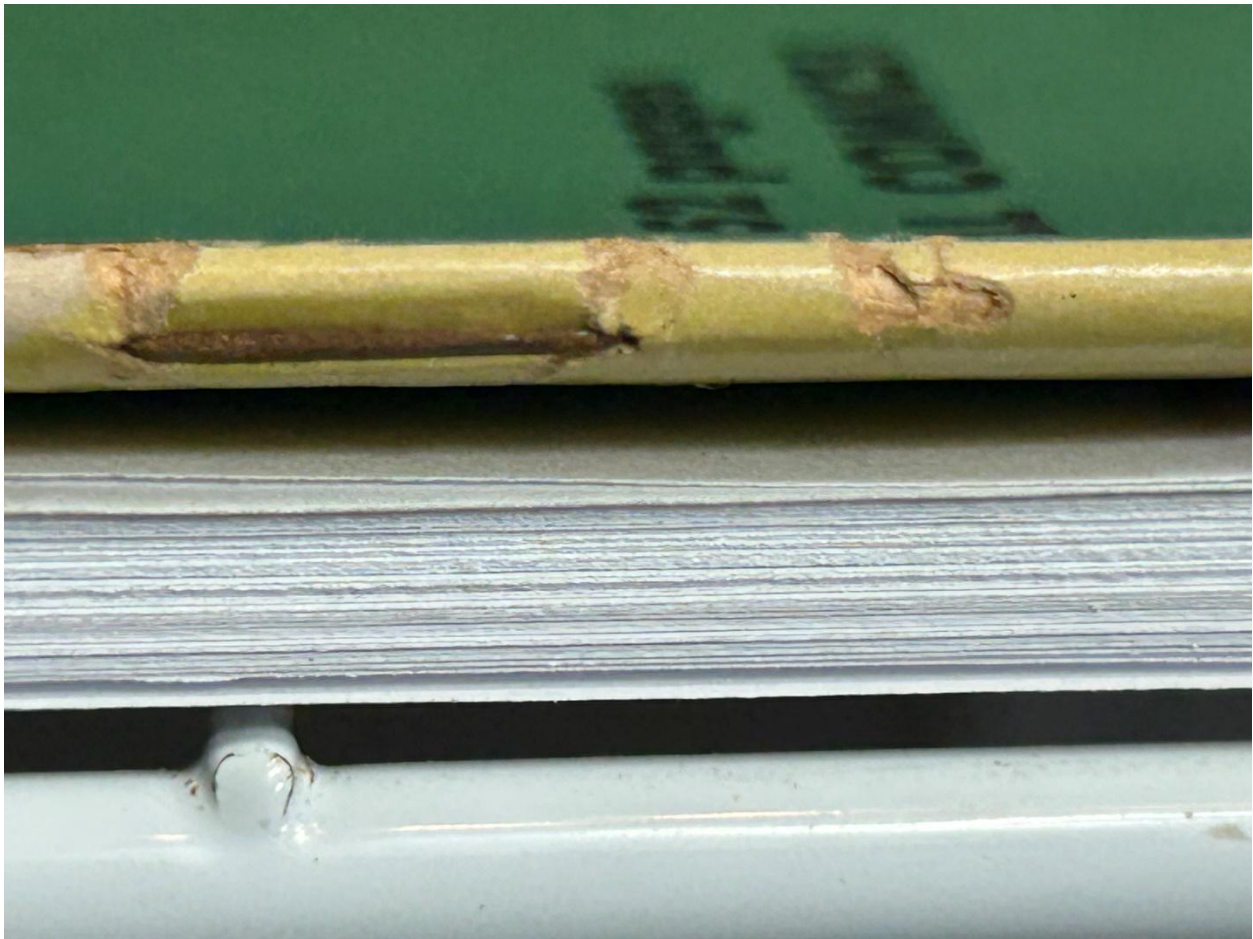
# STAPLES — OBSERVATIONS

*Walt Disney's Comics and Stories – Vol. 10 No. 9 (June 1950)*

## Upper Staple

### Photo Validation (img\_2266 Upper Staple)

The macro image is sharply focused on the staple and surrounding paper, with adequate lighting to assess fiber condition.



### Findings

Paper compression and minor cracking extend approximately **~4–6 mm** from the staple legs. The staple remains seated with no heavy rust migration observed.

### Overall Impression

The upper staple remains intact with localized surrounding stress.

---

## Lower Staple

### Photo Validation (img\_2267 Lower Staple)

The macro image clearly frames the staple, spine fold, and adjacent paper loss, allowing evaluation of fiber breakage.



### Findings

Paper loss and fiber breakage extend approximately **~6–9 mm** outward from the staple. Adjacent fragmentation affects approximately **~10–12 mm** of the spine length.

### Overall Impression

The lower staple remains present but is bordered by substantial paper damage.

---

# BRITTLENESS TEST — OBSERVATIONS

*Walt Disney's Comics and Stories – Vol. 10 No. 9 (June 1950)*

## Photo Validation (img\_2268 Brittleness Test)

The image clearly shows an interior page being flexed, with adequate lighting and focus to observe paper response.



## Findings

The page bends in a smooth arc with no visible fiber fracture or flaking.

## Overall Impression

The tested page shows retained flexibility.